

NEWSLETTER

JANUARY 2017

ISSUE 1

KENNEL COUGH EXPLAINED

What is kennel cough?

Kennel cough is a common infection in dogs which is passed between them. It is not usually caused by a single bacteria or virus but often a mixture of different ones, and just like our colds, it is passed on by coughing and sneezing.

How is kennel cough spread?

Much like the common cold, the bacteria that causes kennel cough floats through the air after being expelled by a cough. The reason this disease seems so common is that it is highly contagious and can be spread anywhere from parks, streets, dog groomers, dog shows, kennels and daycare centres, effectively anywhere and everywhere you go with your dog.

How do I know if my dog has kennel cough?

The most common sign is a dry hacking cough which is often worse when excited or exercising. A bout of coughing can end with a gag and a small amount of frothy phlegm.

What is the treatment?

Kennel cough is usually self-limiting and most dogs recover in 1-2 weeks without treatment. In some cases treatment may be given, especially if it is severe or not getting better.

How do I prevent my dog getting it?

The kennel cough vaccine is a liquid given up the nose and is usually tolerated quite well. The vaccine lasts for one year; however like the human flu vaccine, it only protects against some of the known bacteria and viruses. If a new strain develops dogs can still contract kennel cough.

What should I do if my dog has kennel cough?

If your dog does have kennel cough, make sure they don't come close to other dogs until they have stopped coughing, to reduce the risk of passing it on.



DOG OF THE MONTH

Congratulations to MITSY our special dog of the month

Mitsy is an 8 year old jack russell x patterdale terrier and has been been attending day care with us since November.

Mitsy was very typical of many small dogs, who was somewhat uncomfortable in the company of other dogs preferring the attention of people and not really sure of her dog interactions. Attending day care has helped her grow in confidence with other dogs whilst also becoming more comfortable in her own self without the need for the constant presence of people.

MEET THE TEAM

LORRAINE



I'm the business owner of Pawprints, and i'm passionate about caring for your pups. I had the idea for Pawprints over 10 years ago when I realised that the pet service I needed was a safe, home from home environment, where my dog could play and socialise with other pups, get lots of exercise but most importantly have the love and companionship he needed during the times I couldn't be with him. I love this business and care enormously for each and every pup that is under our care.

ELOISE

Eloise has been working at Pawprints since August and absolutely adores caring for your dogs. Her background has actually been in film production but her true passion was looking after animals so when the opportunity to work at Pawprints arose, she jumped at the chance and hasn't looked back since.



JOSH



Josh works Mondays and Tuesdays and has a wonderful, calm presence with the dogs. He has grown up with a variety of different pets, but dogs have always been his passion. He owns 3 spaniels and regularly participates in gun dog trials and shoots. .

ANN

Ann works the afternoon and late shifts so no doubt you have all met her when you collect your dogs in the evenings. She is our country girl who lives in Upper Coberley with her beautiful black Labrador puppy Jemma who attends daycare with her.



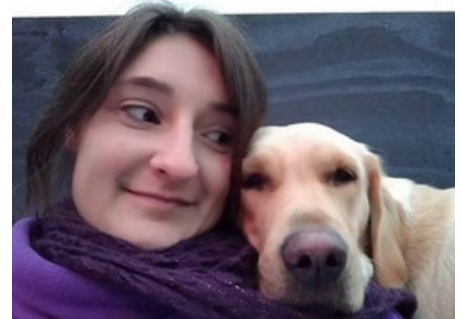
KELLY



Kelly studied animal management at Hartpury College and has always wanted to work with dogs. Kelly lives in Stroud and travels in each day on the bus, which can be a challenge but her love and dedication to Pawprints and the care of the dogs is an inspiration.

JEN

Jen works for us on a Friday afternoon, but spends the rest of the week at the Cheltenham animal shelter as the Volunteer coordinator and Education Office assistant. Jen is also a qualified puppy school assistant trainer and regularly volunteers to help with dog training in Tewkesbury. Her little pup Jake joins us on a Friday afternoon and loves his play dates with us.



ELOISE'S TRAVELS



We will be temporarily losing Eloise during January and February as she is off on a once in a lifetime trip to Thailand to volunteer at an Elephant Nature park. The park is an elephant rescue and rehabilitation centre located in Chiang Mai province, Northern Thailand. The centre provides sanctuary for distressed elephants as well as dogs, cats, buffaloes and many other animals.

Eloise will be joining a team of volunteers helping with the care of elephants; feeding and bathing them in addition to all manner of tasks concerned with elephant care. We will be very sad to see her leave, and miss her enormously whilst she is away, but we will also be very excited to hear about her travels on her return. She will be taking an active part in helping recovering elephants, truly helping to make a difference to their lives and ending their suffering.

INTERESTING FACT

DOGS DO DREAM!!

Scientists have proved that dogs and humans have the same type of slow wave sleep (SWS) and rapid eye movement (REM) and during this REM stage dogs can dream just like we do.

The twitching and paw movements that occur during their sleep are signs that your pet is dreaming - so now you know they really are dreaming about chasing after those pesky rabbits!!

